

ZEKIN[®]

— DOORS AND WINDOWS —

Foshan Desilesi Home Technology Co., Ltd
佛山市德斯莱斯家居科技有限公司

2024

工程案例

Singapore Villa

500m²

westlake avenue,Singapore

65 series,65*45 sliding door

Villa Residence

新加坡别墅

500m²

新加坡西湖大道

65系列, 65*45推拉门

别墅式住宅

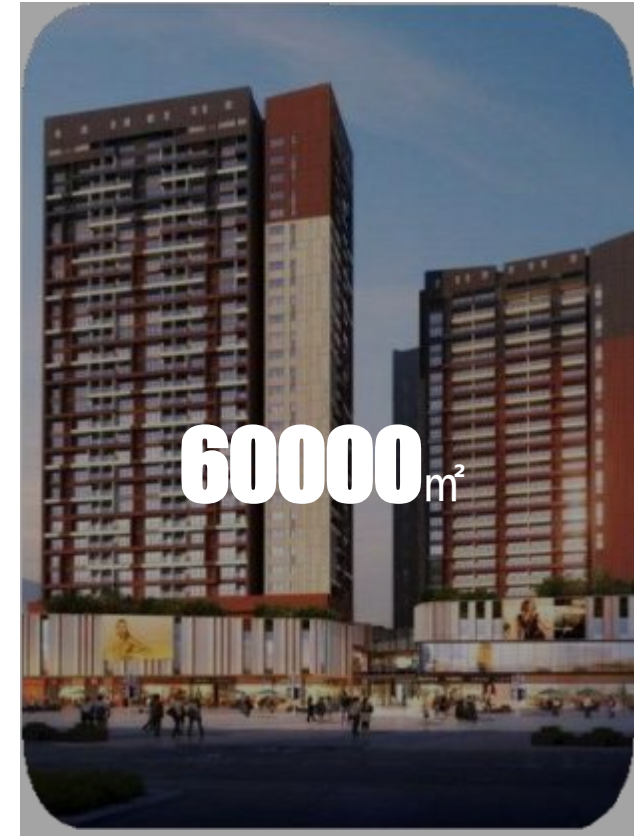
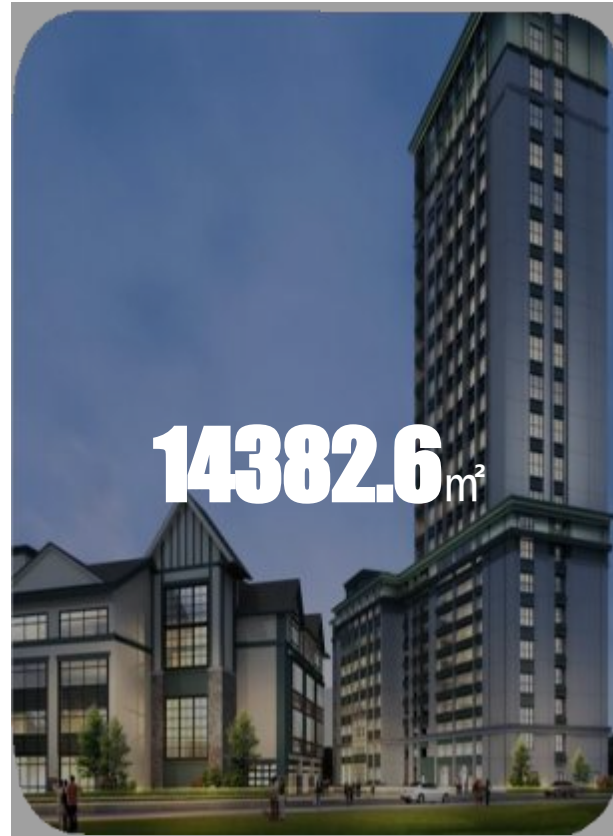


Engineering case

Kengtou village optimization research institute project

Project land area: 14,382.6 square meters

Project requirements: The nature of the land use belongs to scientific research land, and the requirements are high.



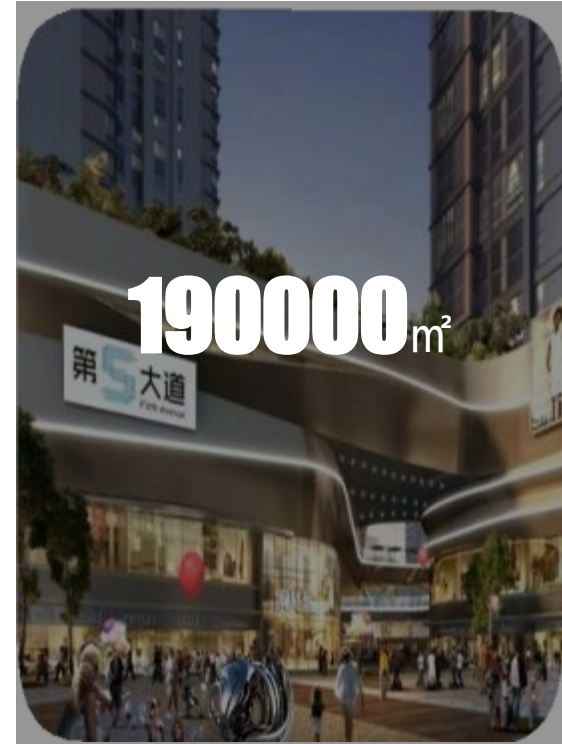
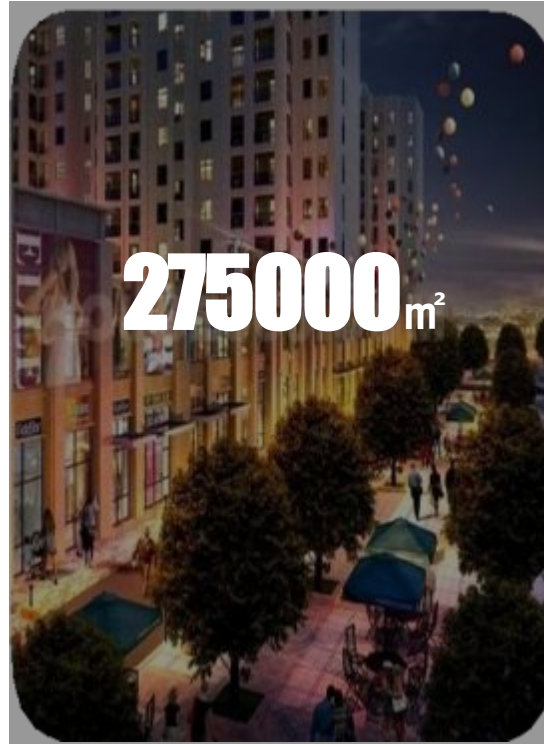
Huizhou Baosheng Residence

Introduction: covers an area of 10,000 square meters, construction area of about 60,000 square meters, using international first-line brand standards, to create a collection of business, office, living in one of the fashion apartment.

Engineering case

Wuxi Poly Champagne International

Introduction: The total land area is about 150,000 square meters, and the building area is about 270,000 square meters.



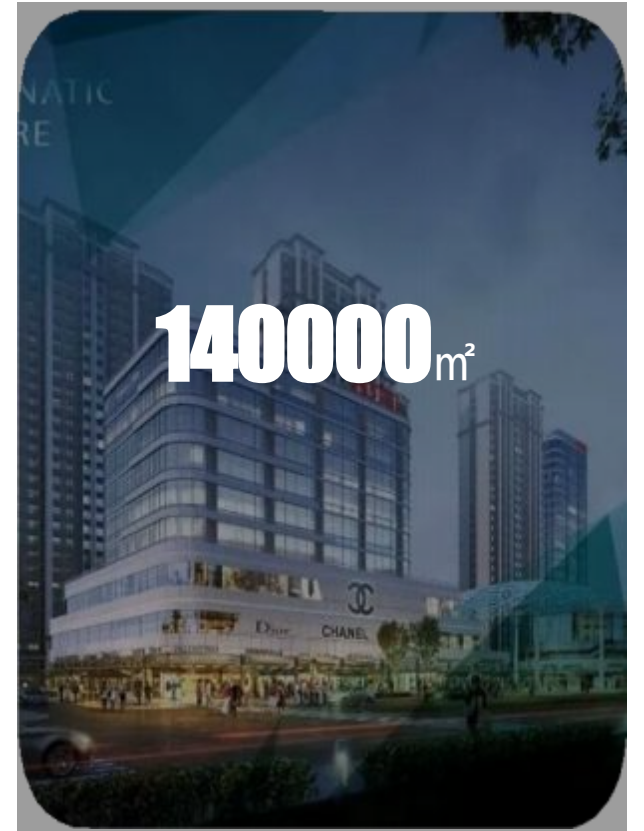
Ganzhou Vientiane City

Introduce: Set residence, office building, hotel, shopping center as one of the urban complex. The project covers an area of 190,000 square meters, planning
It covers an area of 800,000 square meters.

Engineering case

Shenzhen Zhongxi long Bay Shangcheng

Introduction: Construction area 68816 square meters



Hongze District Wuyi International Square

Introduction: The total land area is 47.12 mu, and the total planned construction area is about 140,000 square meters.

Engineering case

Panyu Fuli Ju

Introduce: Fuli residential area for Guangzhou Panyu cherish school district room, 48-131 square meters N + unit, with a bustling business circle, commercial residential complex. It is located in the radiation area of the South Station business circle, and adjacent to Wanbo Chimelong.



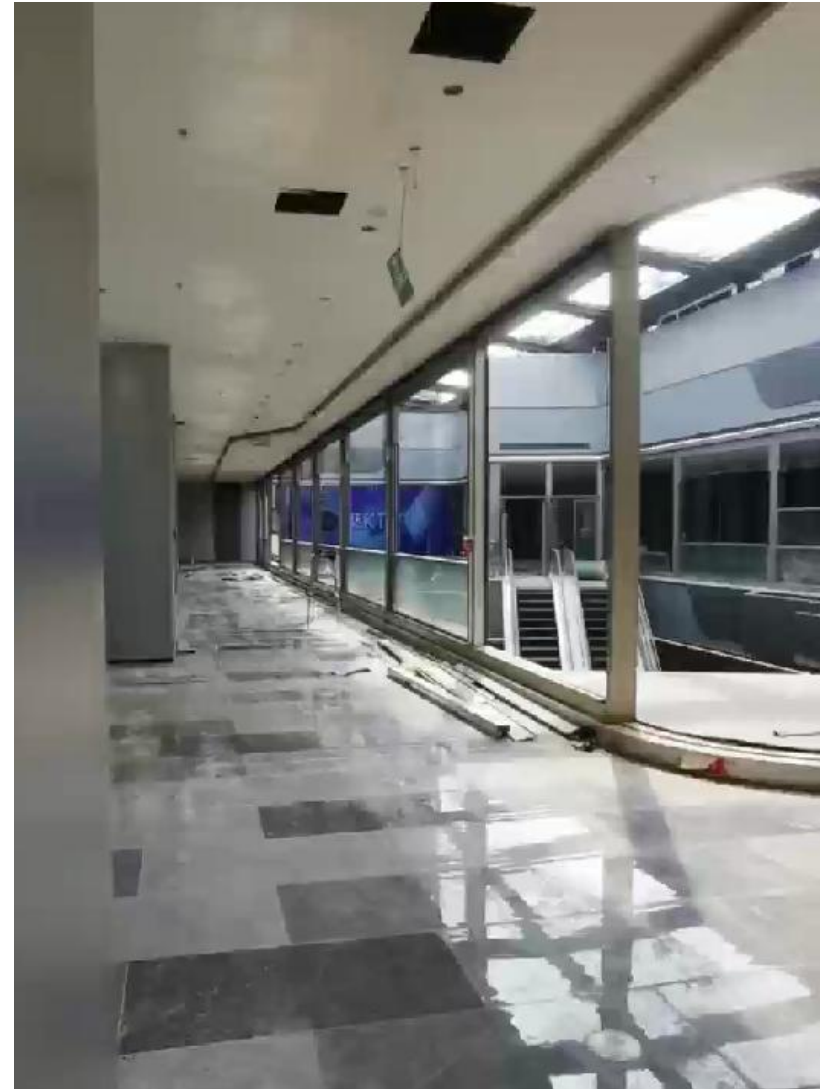
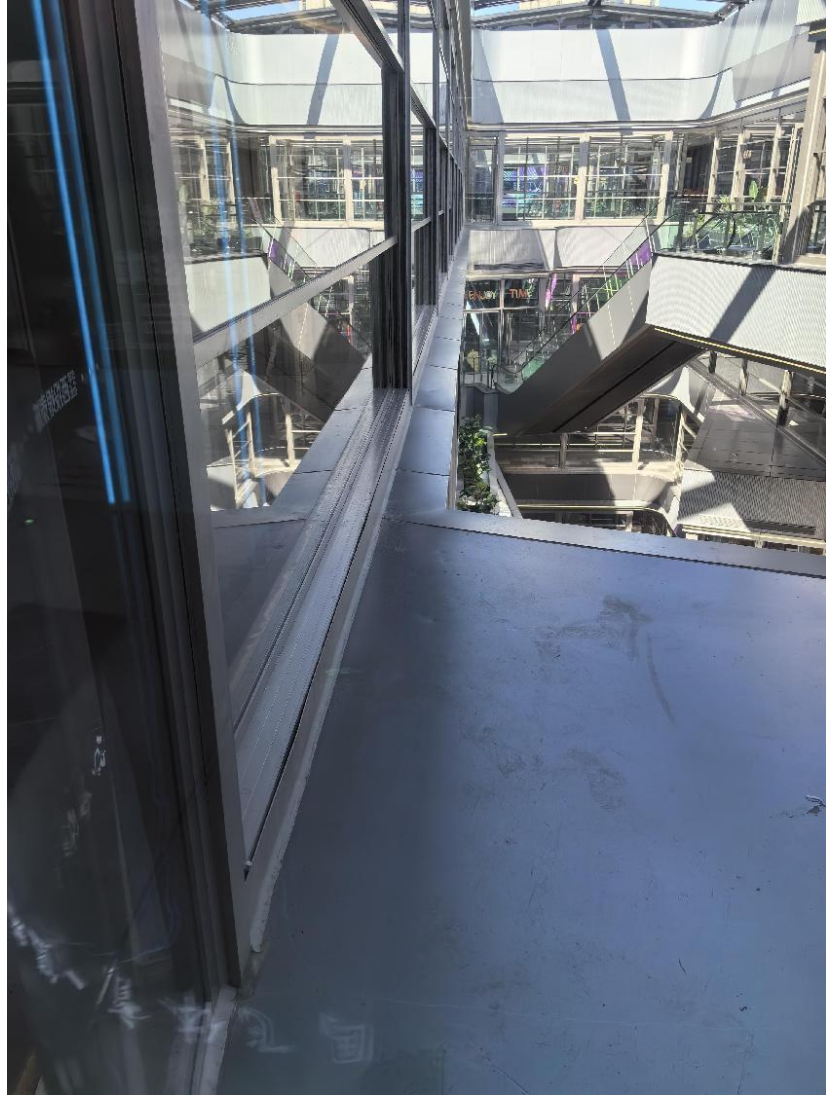
Jinyue Bay, Yichun, Jiangxi

Introduction: It is located in the core area of Yuanzhou New City, at the intersection of Angtai Road and Binhe Road, with a total land area of about 70,000 square meters and a total construction area of about 230,000 square meters.

Realistic Case Picture Display



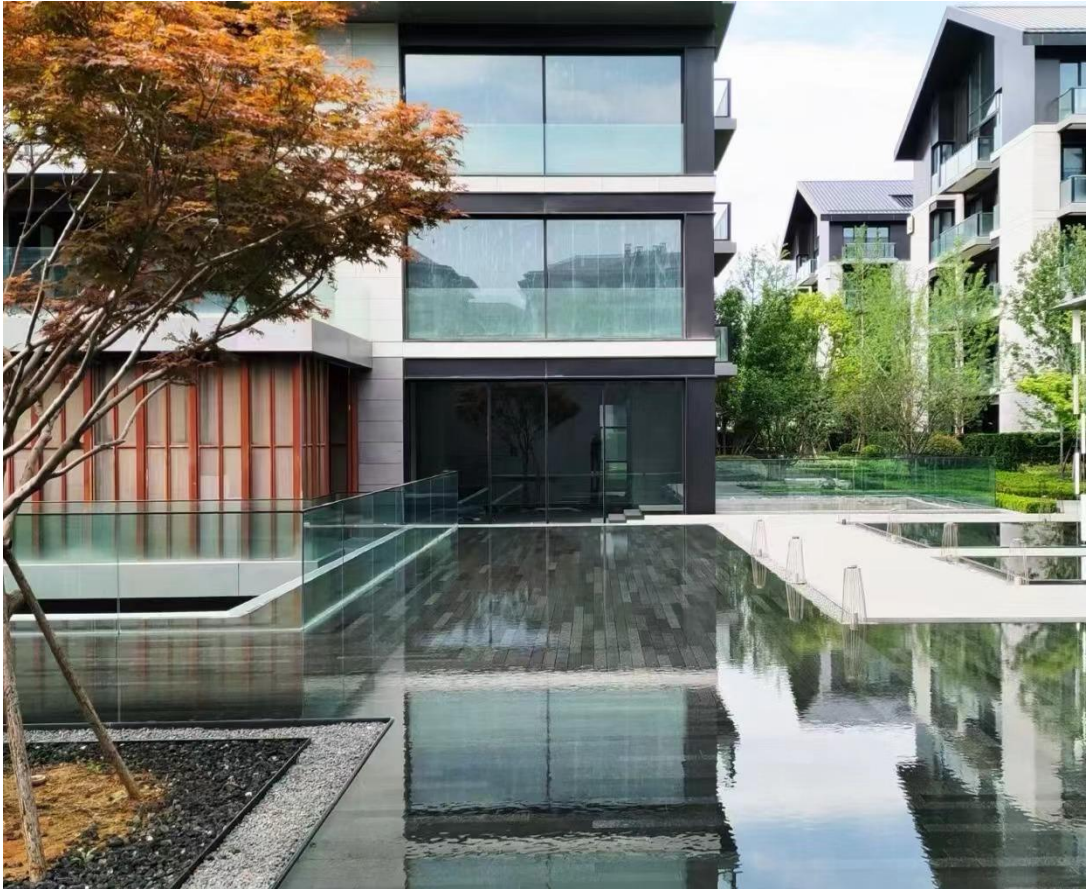
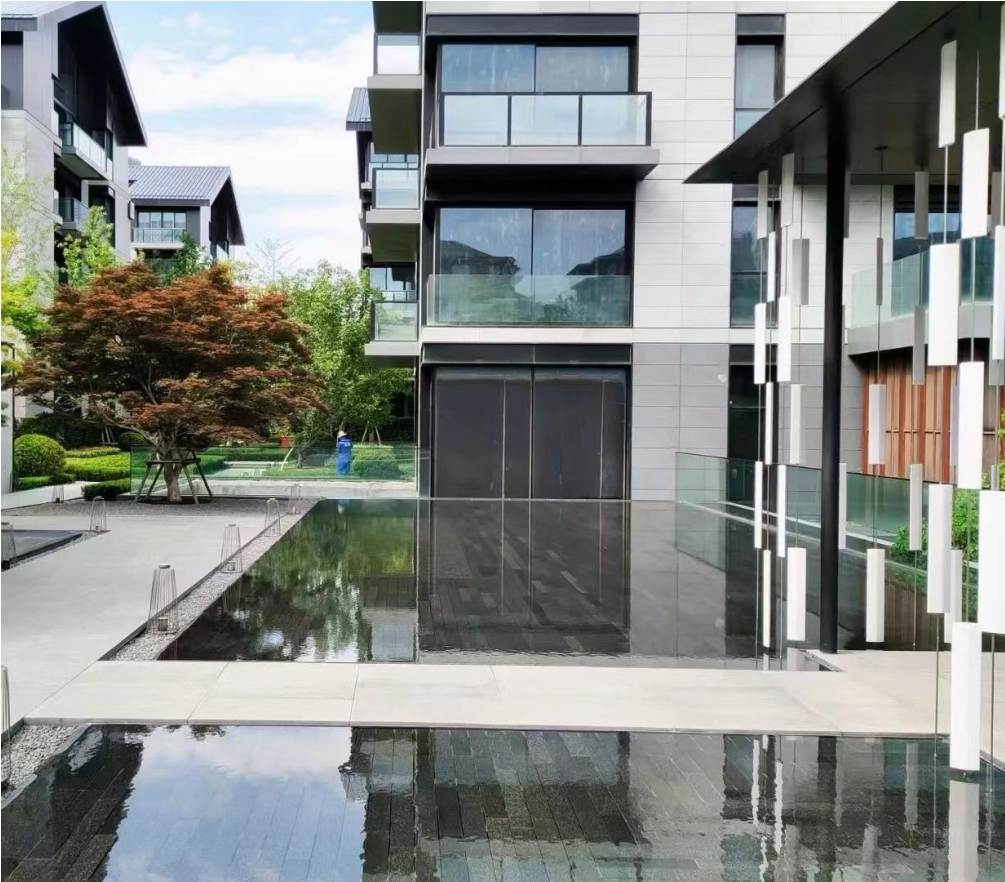
Realistic Case Picture Display



Realistic Case Picture Display



Realistic Case Picture Display



Realistic Case Picture Display



Realistic Case Picture Display



Realistic Case Picture Display



THANK YOU!